

KS-55713 "KLINCY"
on chassis of KAMAZ-53215

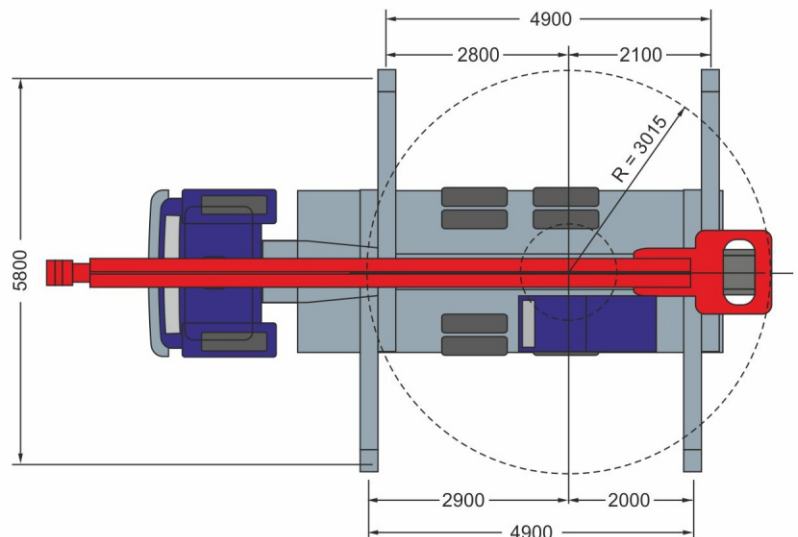
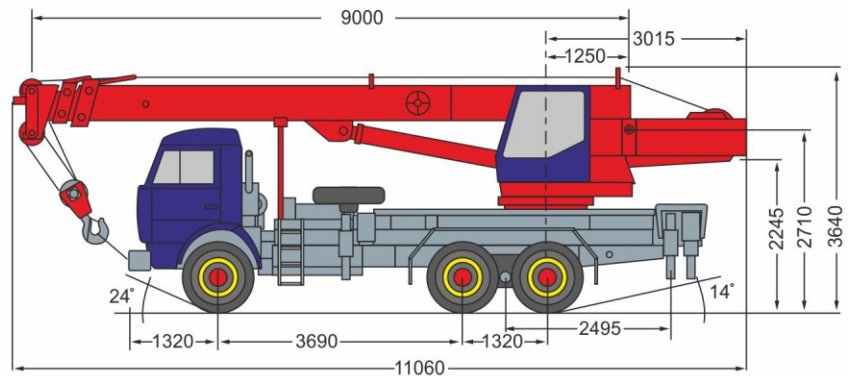


The mobile crane **KS-55713 "KLINCY"** with a lifting capacity of **25 tonnes** and a **21-meter** boom is popular on all the construction sites.

The chassis KAMAZ-53215 has a good passing ability. This crane is one of only a few Russian sets. The jib rotates **360 degrees**.


The **"Klintsy"** truck crane will solve all standard loading and unloading issues on the building site, such as unloading and transferring of any pallets with basic materials, fittings, change houses, containers, concrete goods, metal-rolling and many other tasks.

It is best to make an order of the truck crane few days in advance, as the **"Klintsy"** truck crane is the most in demand.





Lifting capacities

	9,0	9,0	12,0	15,0	18,0	21,0
2,0	25,0	18,0				
2,5			15,0			
3,0				13,8		
3,2	25,0					
3,5	21,5				10,0	
4,0	18,0	18,0		13,8		
4,2			15,0			
4,5			14,2	12,8	10,0	6,4
5,0	13,1	13,1	12,3	11,6	9,75	
5,5						6,4
6,0	9,6	9,6	9,25	8,8	8,0	6,1
7,0	7,4	7,4	7,2	6,9	6,5	5,5
7,5	6,6	6,6				
8,0			5,8	5,6	5,35	4,8
9,0			4,85		4,45	4,1
10,0			4,05	3,9	3,7	3,5
10,5			3,75			
12,0				2,85	2,7	2,55
13,0				2,45		
13,5				2,25		
14,0					2,0	1,9
15,0						
16,0					1,55	1,45
16,5					1,45	
18,0						1,1
19,5						0,9