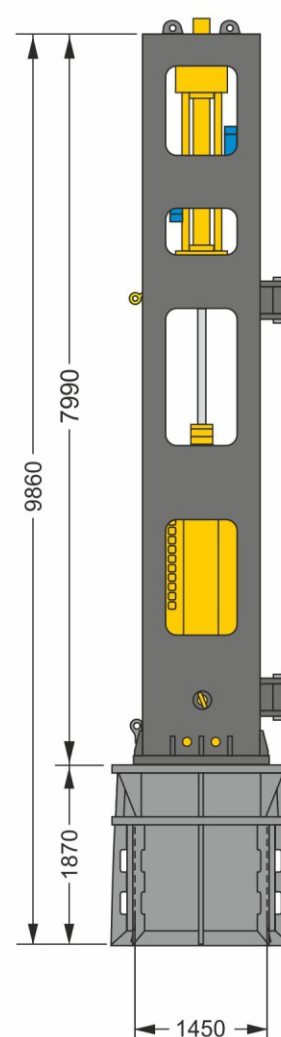
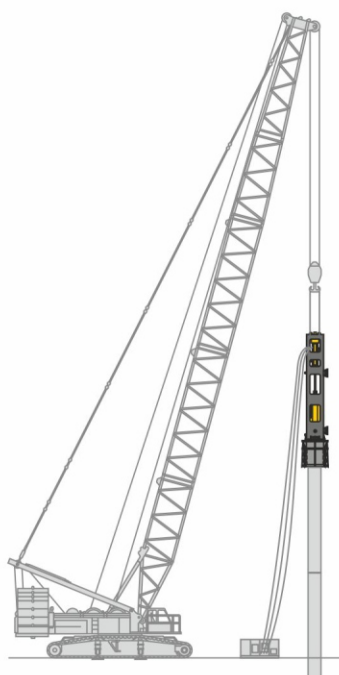


The **YC-25** hydraulic impact hammer is simple and reliable. It is widely used in most piling and foundation works. **YC-25** drives concrete piles, steel sheet piles, casing pipes. Moreover, pipes can be round, square, hexagonal, etc.

The **YC-25** hydraulic hammer is mainly used with crawler cranes. Fast assembly with the station allows you to quickly move the hammer around the facility.

Adjustable impact energy up to **375 kJ** and the ability to work around the clock - gives a very high performance when driving piles! **YC-25** is a popular pile hammer used in the construction of casing foundation, large scale concrete pile sea bridge or ferry pier.

The hammer is suitable for work both on land and at sea.



Technical characteristics of the hammer

Weight of the impact part	25 t
Maximum impact energy	375 kJ
Working stroke	0 - 1500 mm
Impact frequency at maximum impact energy	28 - 95 beats / minute
Hammer weight without top	36 t
The method of lifting the impact part	Double hydraulic cylinder
Overall dimensions of the hammer (L x W x H)	7990 x 1340 x 1450 mm

Technical dimensions of the hydraulic station

Station Model	600P
Power of the station engine	600 hp
Engine Model	CAT C15
Fuel tank capacity	600 L
Working fluid flow	760 L/minute
Hydraulic system pressure	26 mPa
Hydraulic tank capacity	2000 L
Station weight	8 t
Overall dimensions of the station (L x W x H)	4370 x 1830 x 2400 mm

Technical characteristics of the upper part. Sheet pile pipe pile Ø 1420 mm.

Inner diameter	1450 mm
Height with damper	1870 mm
Top weight	10000 kg